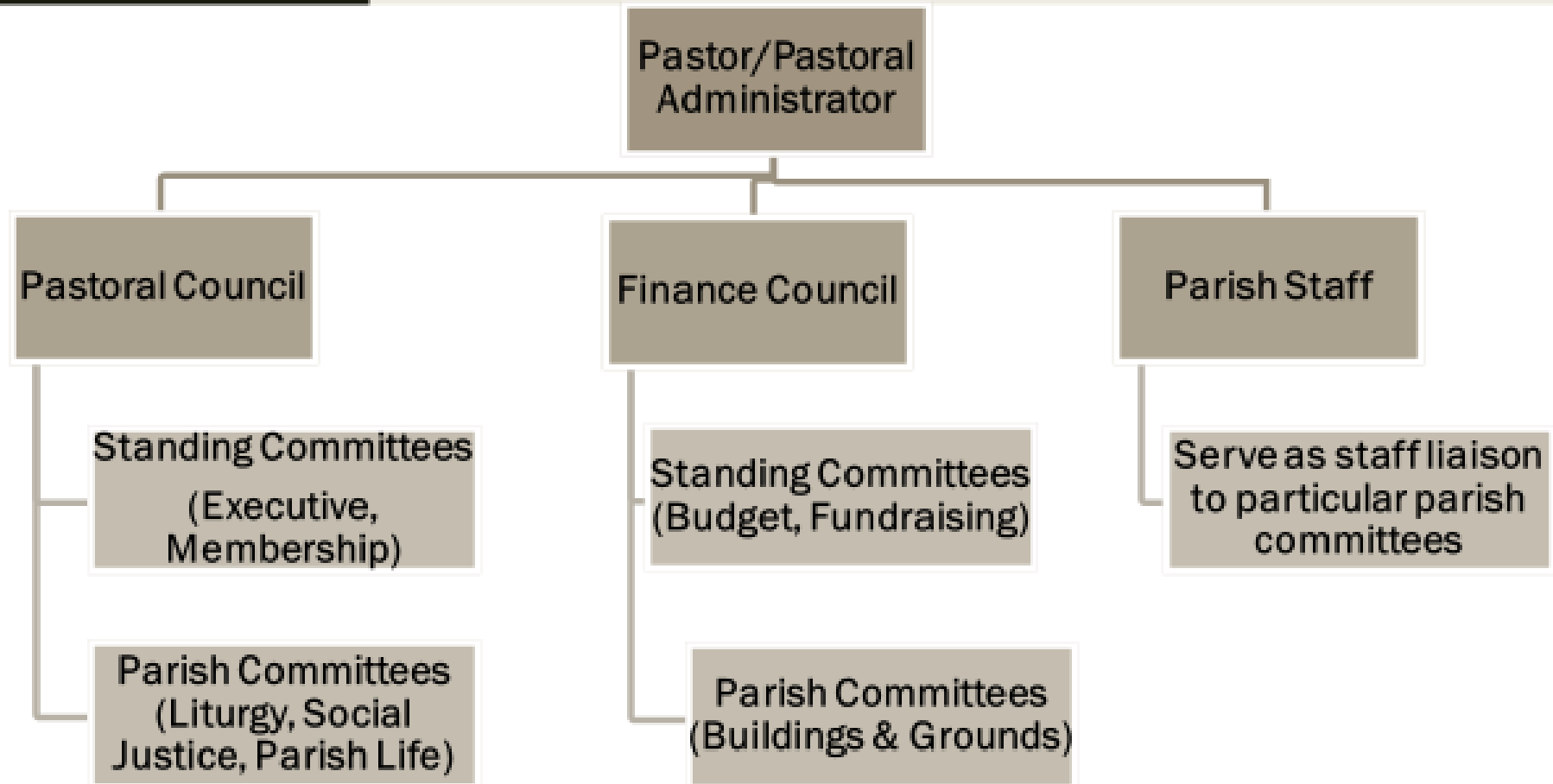


Relationships within the Parish



Relationships within the Parish

	Parish Staff	Pastoral Council	Finance Council
Role of Pastor/Pastoral Administrator	Oversees Daily Operations	Presides over	Presides over
Membership	Hired or Appointed	Selected through parish discernment process	Appointed
Focus	Day-to-day Ministry	Long-range pastoral planning	Long-range financial planning
Areas of Responsibility	Matters pertaining to a job description or a specific area of parish life	Matters pertaining to the life of the whole parish: essential elements	Matters pertaining to budget, facilities, and development
Relationship to Pastoral Plan	Assists as resource	Develops, monitors, and evaluates plan	Assists as a resource
Relationship to Pastor/Pastoral Administrator	Accountable to pastor/pastoral administrator	Consultative to pastor/pastoral administrator	Consultative to pastor/pastoral administrator

Adapted from [Revisiting the Parish Pastoral Council: A Workbook](#) By Mary Ann Gubish and Susan Jenny, S.C. with Arlene McGannon Paulist Press, 2001